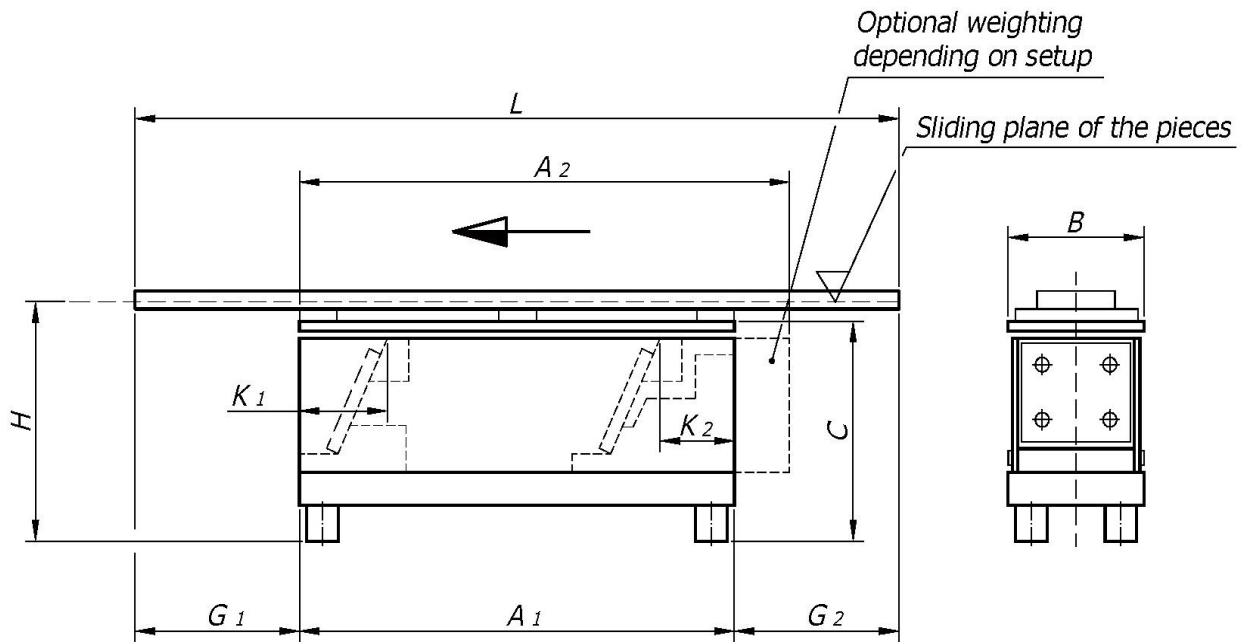


VIBRATORY TRANSFER BUFFER UNITS

Vibrator + guide



Unit model	Measurements (mm)									Guide weight (~) kg		Vibrator model			
	A1	A2 max.	B	C	K1	K2	G1	G2	H	L (~)					
											min.		max.	min.	max.
VL-25/40-3	224	284	80	120	31	66	To be determined by TAD depending on setup				250	400	1	3	VL-30
VL-40/70-6	320	380	110	148	49	93					400	750	2	6	VL-60
VL-60/90-7	562	622	110	153	49	157					700	950	3	8	VL-70
VL-80/110-8	740	800	110	153	49	157					850	1100	4	10	VL-80

NOTES

- 1.- The "H" measurement is determined according to the geometry and position of the piece to be transported and the guide's inherent slimness and moment of inertia.
- 2.- The "L" measurement limits in the table (max./min.) are provided as a guide. For the usual setups, intermediate values tend to be used.
- 3.- The guide's front overhang ($G_1 + K_1$) must generally be equal to or greater than the back overhang ($G_2 + K_2$).
- 4.- To help you decide on the right vibrator model and type of bowl, we recommend that you contact our Technical/Sales Department directly.