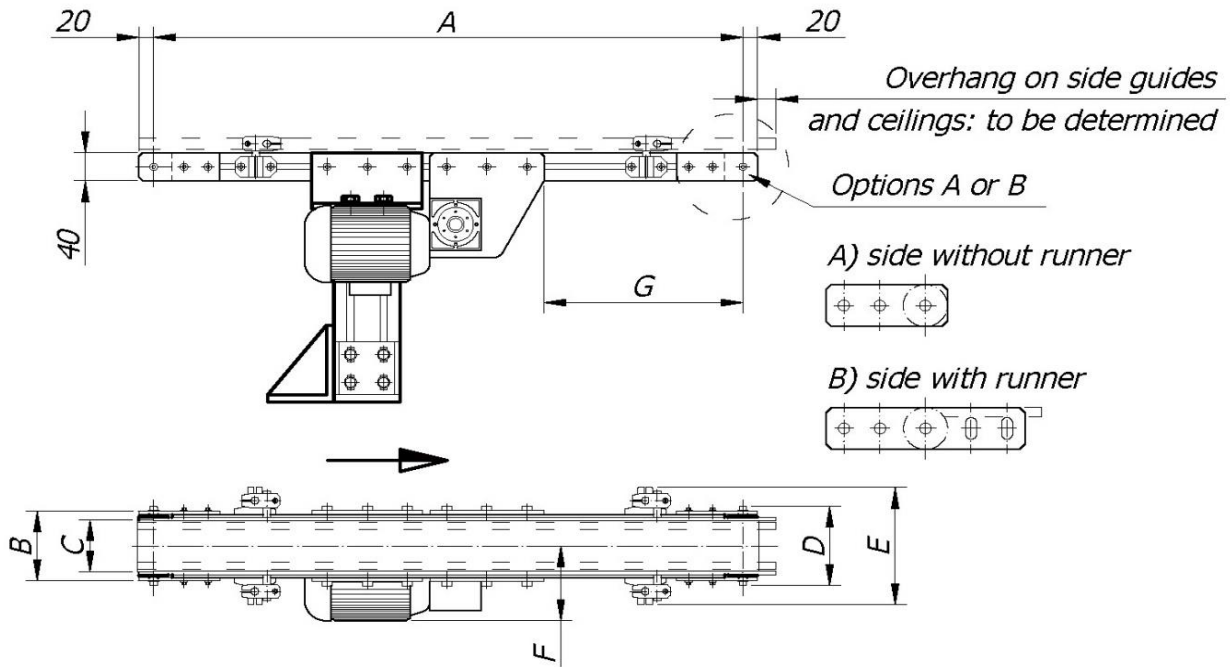


# MOTORISED TRANSFER BUFFER UNITS

Conveyor belt + guide



Unit model	Measurements (mm)								
	A		B	C	D	E	F	G	
	max.	min.						min.	max.
TB-04/*	3000	450	50	28	65	116	140	85	To be determined depending on setup
TB-08/*	3000	490	90	65	105	156	160	85	
TB-12/*	3000	560	130	105	145	196	180	85	

(\*) - The transfer buffer unit model is complemented by the distance between the centre of the drums ("A"), expressed in centimetres (e.g. TB-12/300, to define a distance between centres = 3,000 mm.)

Linear speed (m/min)	30,5	21,4	14,2	10,7	7,1	5,3	4,3	3,6	3	2,7	2,1
Reduction ratio (Motor 1360 rpm / 50 Hz)	1/7	1/10	1/15	1/20	1/30	1/40	1/50	1/60	1/70	1/80	1/100

## NOTES

- 1.- Diameters of the drums at each end: 40 mm.
- 2.- The belt's feed speed may be fixed, as indicated in the table or adjustable through the installation of speed control.
- 3.- To help you decide on the right transfer buffer unit, we recommend that you contact our Technical/Sales Department directly.